

6th, October, 1979.

Dear Herrn Prof. Dr. W. Harthun;

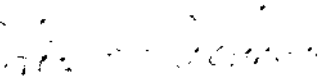
Thank you very much for your kind letter.

I am very much pleased to hear from you that you are interested in my research about the aura meter applying a new hypothesis called "The Electric Field Induction Effect" (E. F. I. E.).

I will enclose herewith a copy of my paper about the E. F. I. E. and the article which I distributed to persons present when I gave the lecture at the 9th International Conference of Parapsychology in Italy, hoping to be useful for your work.

I wish you that your work will develop more and more prosperously.

Yours Sincerely


Dr. Hideo UCHIDA
4-18-5 Kamikitazawa,
Setagaya-ku, Tokyo,
156, JAPAN.

THE ELECTRIC FIELD INDUCTION EFFECT AND ITS APPLICATION

#1 #2

By Hideo UCHIDA, JAPAN

(SYNOPSIS)

The true nature of aura, like that of electromagnetic waves, has not been elucidated yet to the present day. However, very rare mediums endowed with peculiar parapsychological ability can see aura with naked eyes and can draw its shape and colors.

About 15 years ago I happened to meet such a peculiar medium who can see aura with naked eyes; then I perceived that the common sense of physics and electromagnetics, which I had believed implicitly until then, contained a grave defect. My entire conception of the universe underwent a revolutionary change.

For example, a dry cell of 1.5 V generates a yellowish aura at its positive pole and a light purple aura at its negative pole. They emanate a halo invisible to naked eye.

When a wire is connected to a pole of the dry cell, its extremity, too, begins to emanate aura. A technician imbued with the common sense of electronics engineering would be dumbfounded to hear such a phenomenon.

I have subsequently conceived a new hypothesis³⁾ called "The Electric Field Induction Effect (E.F.I.E.)" which is unknown to the conventional electromagnetic theory, after investigating prudently the method of detecting aura phenomena with the understanding cooperation of over 10 mediums of peculiar parapsychological ability.

1. Marvel of Human Aura

The Electric Field Induction Effect (E.F.I.E.) is the phenomenon that a matter moving along the radiation direction of electromagnetic energy field experiences the increase of sojourn negative charge when it is approaching the source of electromagnetic radiation energy, and the decrease of sojourn negative charge when it is receding from it (Fig. 1).

If the moving matter is a conductor or semiconductor, the variation of sojourn negative charge may be taken out as the variation of electric current or voltage through the extremely high resistance as in Fig. 2.

This phenomenon is a fundamental one, and can also be observed in the case of electric light, broadcasting waves, electromagnetic waves radiated by spark discharge and biological energy surrounding living matters and rooted plants. It is also observable in the direction of Constellation Orion.

Even a powerful magnetic field does not give rise to similar effect. This is the basic difference of this phenomenon from Faraday's Electro-Magnetic Induction Effect.

The aurameter shown in Photo 1 has been developed applying this principle to the detection of aura. When we observe the aura phenomena of our environment with it, we found that there is no material

#1 Honorary Member of The University Alumni Association of Japan.

#2 Home Address: 4-8-5 Kamikitazawa, Setagaya-ku, Tokyo, 156, Japan.

body in the universe which is not radiating some aura and no space absolutely devoid of aura, although its intensity varies.

Our living environment is literally filled with aura. Do not the "Awagihara" in Shintoism, and Brighting clouds world in Buddhism signify the world of aura in our living environment? We have now a scientific instrument to detect it.

After clasifying some 4,000 actual observations of the aura surrounding human bodies, I have found that there are 3 fundamental types of human aura as in Fig. 3. They closely resemble the halo behind Buddha's images as told traditinary from ancient times. They may be called Amitabha-type, Kannon-type and Acala-type.

These characteristic human auras are often hereditary. A man's aura resembles that of his father's, while a woman's aura resembles her mother's as if to testify to the karma of one's ancestors.

By these experiment, I have begun to suspect that the traditional aura of a Buddha's image is not a phenomenon peculiar to Buddha, but the emanation of all living human bodies depicted by many mediums who can directly witness the aura phenomena by their naked eyes.

A very interesting fact is that the observed human aura undergoes characteristic changes through the person's health and mental states (Fig. 4 - 8). An ordinary human body radiates an aura of the size shown in Fig. 9. It is known to vary according to weather, seasons, hours of the day and environment.

People of peculiar ability, such as those who can bend spoons or explode plastic ball-point pens, radiate the aura 100 times stronger in terms of electric voltage and 10,000 times stronger in terms of electric power than that of ordinary people. If we assume that an ordinary person emits an energy of about 60 watts, such peculiar person radiates an energy of 600 kilowatts.

However, we feel no electric shock even when we shake hands with spoon-bending boys and girls. What, then, is the nature of the aura energy? If we can once uncover its true nature, an energy revolution is certain to occur.

Summary

2. Celestial Electric Waves Control Human Destinies and Give Rise to Four Seasons:

I found some interesting fact when I have studied aura in detail using E.F.I.E. The radiation from the direction of center of the Galaxy, sunbeam, radioactive rays from radioisotopes, the secondary radiation of the ordinary electromagnetic energy mentioned earlier, the emanation from plants whose roots have been cut off, and the emanation from inanimate matters show polarity opposite to that shown in Fig. 1.

This fact indicates that there are two fundamentally opposite types of electromagnetic energy when it is detected by a frequency meter as aura components. This is very important subject of research for the future electromagnetism.

Another curious fact is that some aura components penetrate the electromagnetic shield while others do not. The aura component in the electromagnetic energy radiated by spark discharge or radioactive elements easily penetrate such shield. The aura due to the celestial electromagnetic waves coming from the direction of center of Galaxy, which is thought to be radiated from a nuclear source, can be obser-

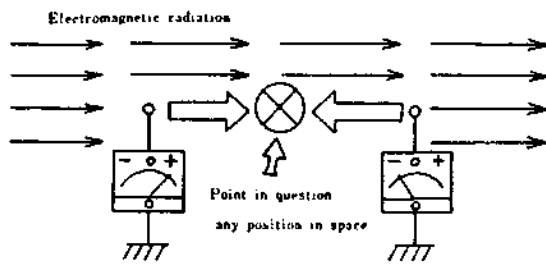


Fig-1 Basic explanation of Aura phenomenon by E.F.I.E.

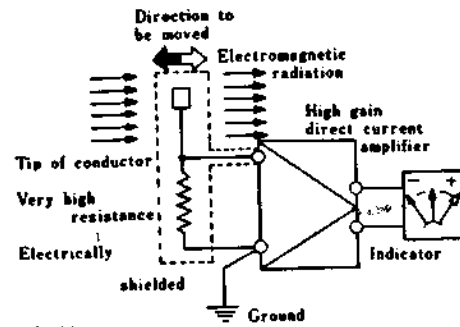


Fig-2 Principle of measurement.

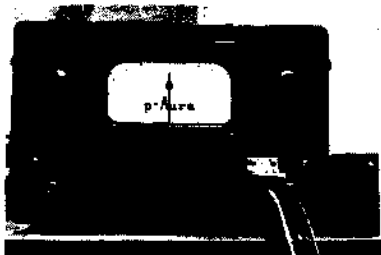


Photo-1 Aura meter

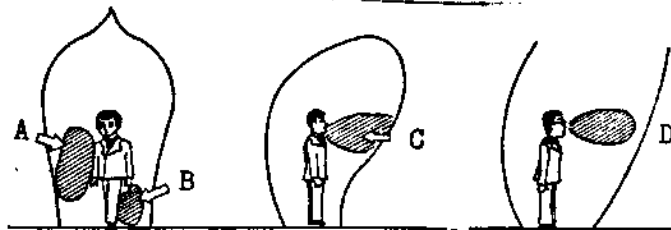


Fig-4 Abnormal aura when the body is afflicted with fatigue or disease.

A: Fatigue of arm. B: Fatigue of leg.

C: Throat is smeared with dust.

D: Unbalance of right and left visions.

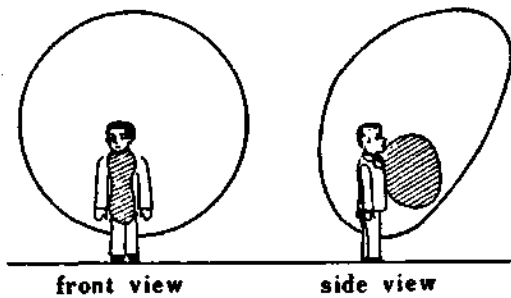


Fig-5 Unusual aura caused by taking food and drink with positive electricity.

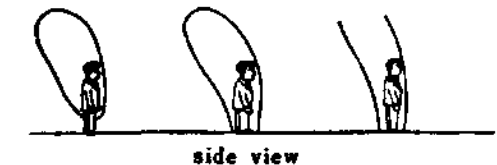
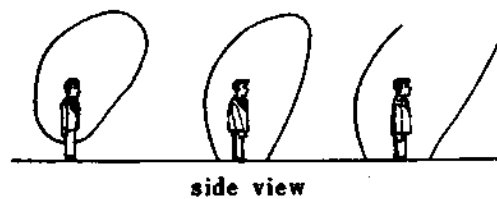
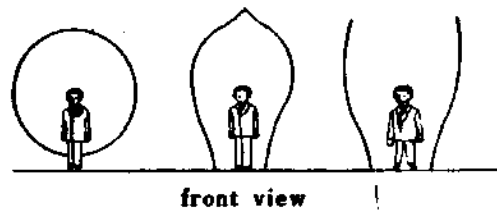


Fig-3 Basic types of human aura, as observed with the aurameter.

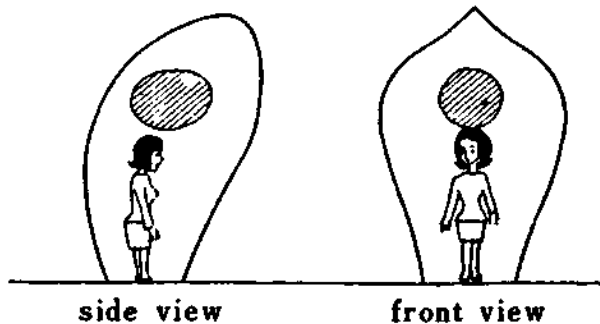


Fig-6 Unusual aura around a person who has anguish of heart.

ved even after going through the earth. Fig. 10 explains this situation. It was measured in the vicinity of Antares, a star located roughly near the direction of center of Galaxy as seen from the earth.

Fig. 11 is one example of the measurement of aura component in the celestial electromagnetic waves. When this type of measurement develops to a stage of practical application in future the orientation through celestial aura may become possible not only on land, but also on and under the sea.

The measurement of aura component in the celestial electromagnetic waves coming from the direction of Orion by means of E.F.I.E. has revealed that the energy radiated from that constellation is too powerful to be accounted for by an artificial source. It leads to the conjecture that not only the solar system including the earth, but also the entire Galaxy may be excited by the electromagnetic energy radiated from somewhere in the constellation Orion.

Owing to the rotation of the earth on its axis, our world is moving towards the east at a speed shown in Fig. 12. The people living in Tokyo for example, are flying towards the east at an enormous speed of about 375 m/sec. or 1.2 Mach.

Even if our environment does not move at all ourselves, the electric charge in every conceivable object around us, including our bodies, undergoes incessant changes owing to the energy contained in the celestial electromagnetic radiation and E.F.I.E. accompanying the earth's rotation.

As explained by the example of Constellation Orion in Fig. 13, the effects of electromagnetic waves from stars rising in the east or sinking in the west are at the maximum. The phase of the electric phenomena becomes reversed at meridian.

It is conceivable that our living environment stands under direct influence of this incessantly changing celestial electromagnetic field. Everything in the universe influence each other explicitly or implicitly.

The above thinking takes into account only the rotation of the earth on its own axis and its revolution around the sun. It is needless to say that we must consider also the latent effects of the motions of the solar system and the Galaxy as whole.

According to experiments by means of E.F.I.E. electric charge in matter seems to increase when temperature and atmospheric pressure are rising. Then negative electricity is generated. Otherwise, positive electric charge is generated. These fundamental phenomena, together with the fact that the earth's axis is inclined at about 23.5 degrees with respect to the normal of ecliptic plane, give rise to the change of four seasons.

Our living environment is being influenced to a large extent, further by the movement of heavenly bodies as well as relative position of the sun and the moon. (Fig. 14) I think the rhythm of these factors may be fundamentally controlling the destiny of human beings, too.

3. Celesticed Electromagnetic Waves May Be The Cause of A Great Earthquake:

When the earth travels in space filled with celestial electromagnetic radiation the variation of electric field by E.F.I.E. the earth's crust owing to E.F.I.E. accompanying the rotation of the earth (Fig. 13).

It sometimes occurs that the electric variation due to E.F.I.E.

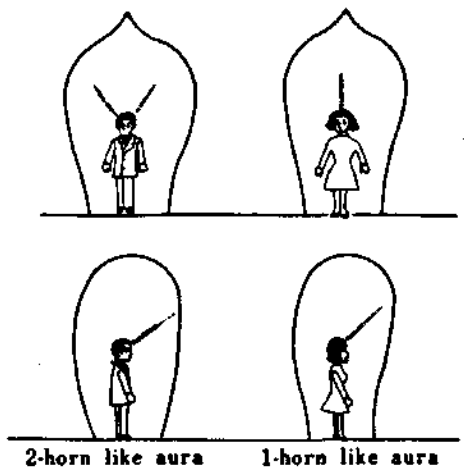


Fig-7 Unusual aura around an angry person.

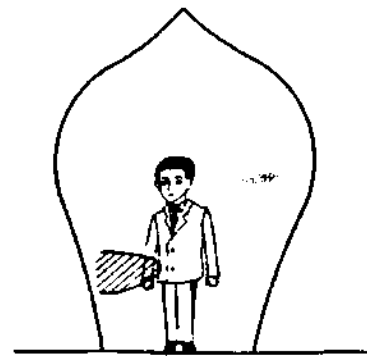


Fig-8 Unusual aura around a person who has been operated upon for appendicitis.

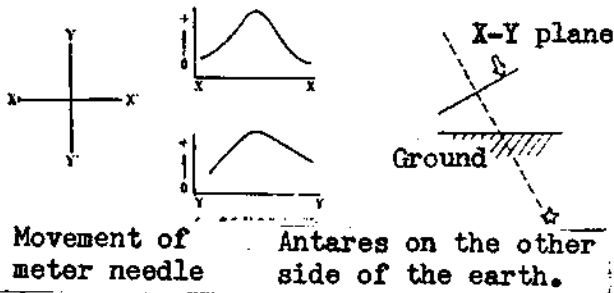
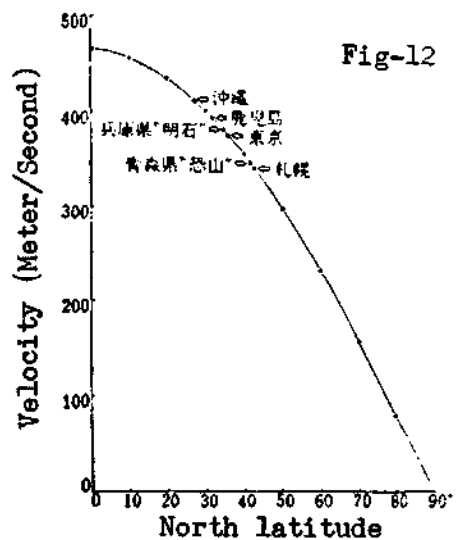


Fig-10 The energy of celestial electric field by E.F.I.E. as measured with respect to the direction of Antares.



of the stars rising in the east and sinking in the west cause rhythmical vibration of alternate positive and negative charges. The period of this vibration is in the order of microhertz or millihertz. If a part of the layers in the earth's crust resonate with this vibration the amplitude may grow Q times like the LCR tuning circuit. In other words, the energy of the space electric field by E.F.I.E. is amplified Q-fold.

If mechanical stress happens to be accumulated in a part of the layers, an earthquake may break out all of a sudden. I have checked the times and places of the occurrence of big earthquakes in the past, and found that one of following 4 conditions (in case of northern hemisphere as Japan) is always present:

(1) Orion is rising at the eastern horizon. Antares of Scorpio, which lies in the direction of the Galaxy center, is sinking in the WSW. The Milky Way hangs from ENE to WNW like bridge.

(2) Antares of Scorpio is rising at the horizon of ESE. Orion is sinking in the west. The Milky Way is roughly parallel to the horizon.

(3) Orion is making a transit of the meridian, or is just southing. At about this time the Milky Way hangs in the sky from NNW to SSE like a bridge.

(4) Antares of Scorpio is making a transit of the meridian, or southing. The Milky Way hangs towards the east. It spans the sky from north to south like a bridge.

The positions of these constellations and the Milky Way can be easily found by using a planisphere. The time zones of (1) and (2) correspond to the maximum of celestial electric field by E.F.I.E. mentioned earlier. The time zones of (3) and (4) correspond to the period when the polarity of celestial electric field by E.F.I.E. is reversing owing to the incidence of electromagnetic waves from the direction of Orion or Scorpio (center of the Galaxy).

Past statistics of earthquakes show that a big tremor tends to occur when one of these condition is superposed by the simultaneous rising or sinking of heavenly bodies radiating strong celestial electromagnetic waves such as the sun, the moon or planets, or by their conjunctions or oppositions (Consult the astronomical almanac or ephemeris concerning the conjunctions and oppositions).

Therefore we can probably predict the outbreak of an earthquake by the techniques as follows: The best way is to revive the positions of stars and heavenly bodies with a planetarium and examine the change and period of celestial electric field by E.F.I.E. at the time of past earthquake. We can thus estimate the resonance frequency of the layer in the region. Perhaps we can predict the occurrence to some extent by studying when the same configuration of heavenly bodies will take place.

However, the occurrence of an earthquake may be prevented by the rain on the previous day, even if the heavenly configuration is the same. This is probably because the resonance frequency of the layer is altered through rain water, or because the rain cloud reduces the electrical insulation resistance of atmosphere so that the effect of the celestial electric waves on the earth's crust is damped. At any rate the past data point to the fact that a great earthquake does not break out immediately after a heavy rain.

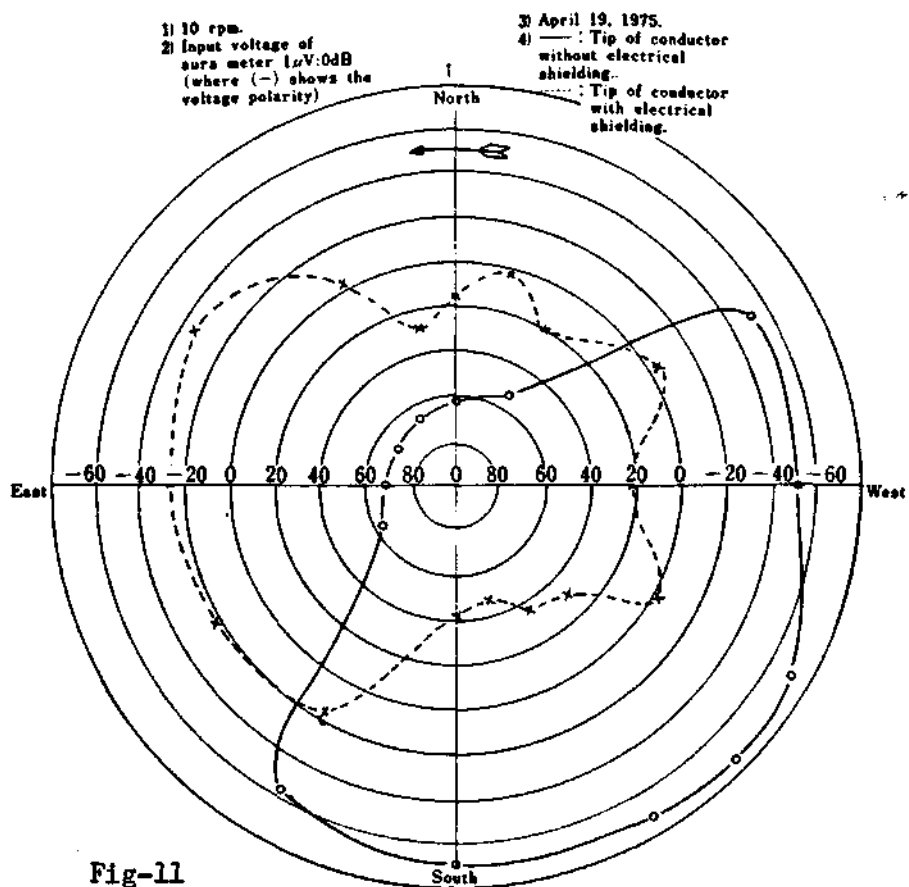


Fig-11

Directional electrical field from the environment

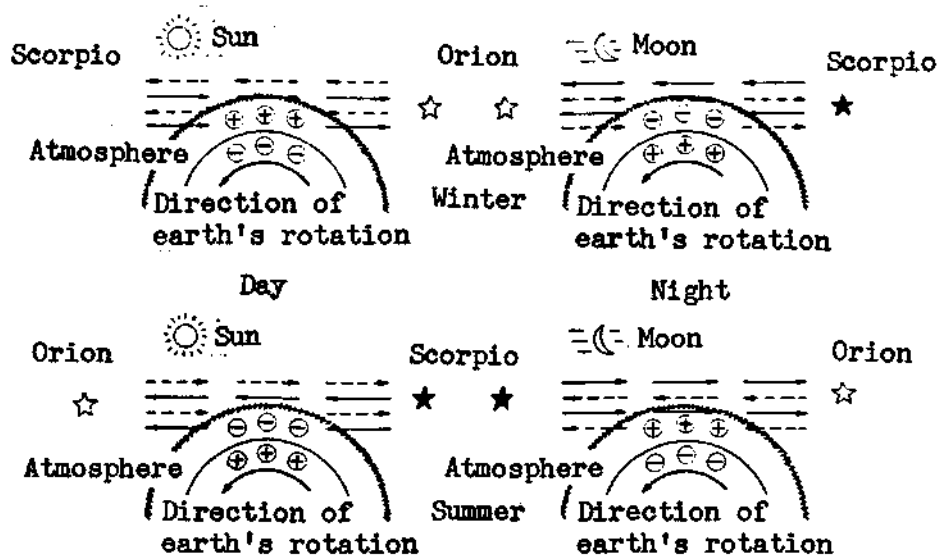


Fig-14 How the energy of celestial electro-magnetic waves controls the seasons of summer and winter through E.F.I.E. of the earth's rotation.

4. A Malicious Aura Confuses Electrical Balancing Character of The 'Tsubo' in the Human Body:

The celestial electric field emanating from the Constellation Orion or Antares of Scorpio (in the direction of the galaxy center) can be readily observed with a celestial electric field meter (Photo 2) or aumeter applying E.F.I.E.

As long as such electric field by E.F.I.E. exists, the phenomena of electric polarization, that is, of aura should take place in space. They change incessantly through the influence of the sun, the moon and planets.

The electric polarization and the occurrence of aura in our living environment is more complicated than before by artificial means in human society such as air pollution due to dust incineration, waste gas from factories, and exhaust from cars. Even when dust particles in the smoke are completely removed, polluted air itself is charged with electricity and radiates electromagnetic waves.

The absence of smoke does not signify the absence of pollution. Charged molecules of the air generate electromagnetic waves through oscillation. The malicious aura by these causes contained in them penetrate the clothes and directly hit human bodies.

Charged molecules of the air are generated not only through smoke pollution, but also through ionization near high voltage power sources and TV picture tubes. They are emanating malicious aura around them. This aura is called malicious because the human body sensitively reacts to a minute quantity of electricity.

According to many experiments, tsubo (points) distributed over the entire human skin are known to be electrically distorted as soon as they are exposed to drifting positive ions of over about 40 micro-micro-coulomb. On the other hand the effect of negative ions is only about 1/25 time as strong as that positive ions. In other words tsubos with a diode characteristic of about 1:25 are distributed all over the human skin. Fig. 15 shows the experimental data.

Tsubo (the point) is a technical term used in acupuncture and moxibustion. The human body is an aggregate of organic single crystals such as bones and muscles. Tsubo may be regarded as the place where the extremity of the crystal axis is exposed on the skin surface.

These crystal axes are connected to various organs of the body in a definite manner. Some tsubos correspond to the stomach, others to the intestines. When the tsubo is stimulated, characteristic stimuli are electrically transmitted to each organ. The route of the stimuli from tsubo to the organ is called channel "Keiraku". Tsubos and channels (Keiraku) known to acupuncture and moxibustion are indicated in Fig. 16.

There are 12 pairs of channels (Keiraku) for the heart, lungs, intestines, the liver, kidneys, bladder, stomach, etc. and two independent channels (Keiraku) which is called "Ninmyaku" and "Tokumyaku", 26 in all. Principal tsubos number 666; They are distributed throughout the skin surface according to a definite plan.

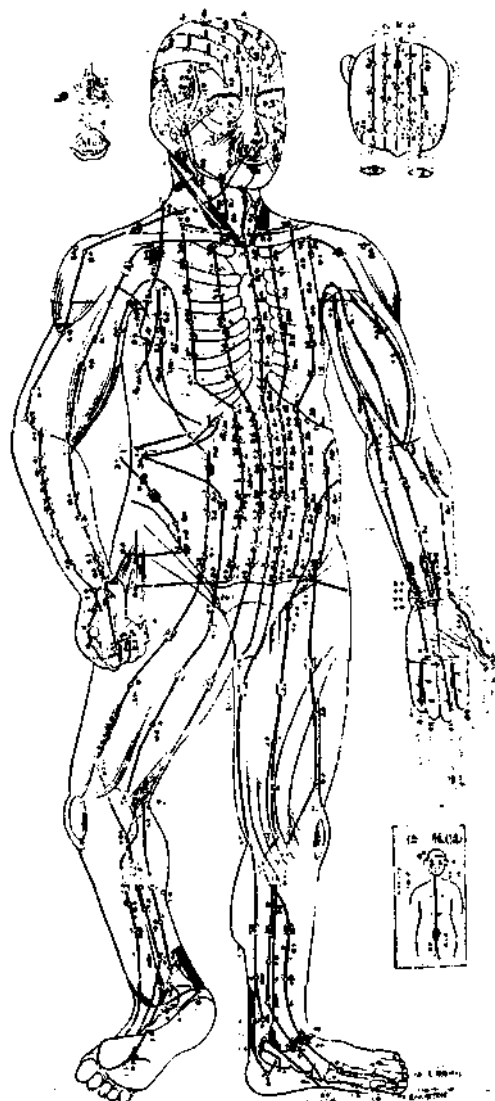
As a piece of crystal oscillates under a very feeble electric voltage, the human body, which is an aggregate of organic single crystals, reacts promptly to a very feeble electric stimulus.

An extremely small amount of positive electric charge tends to disturb the electrical balance of tsubos in the right and left halves of the body. The disorder of tsubos is the direct cause of illness.

神谷英史校閱 本間祥白繪
井上茂雄補筆

鍼灸經絡經穴圖鑑

十四經流注圖



神谷英史校閱 本間祥白繪
井上茂雄補筆

鍼灸經絡經穴圖鑑

十四經流注圖

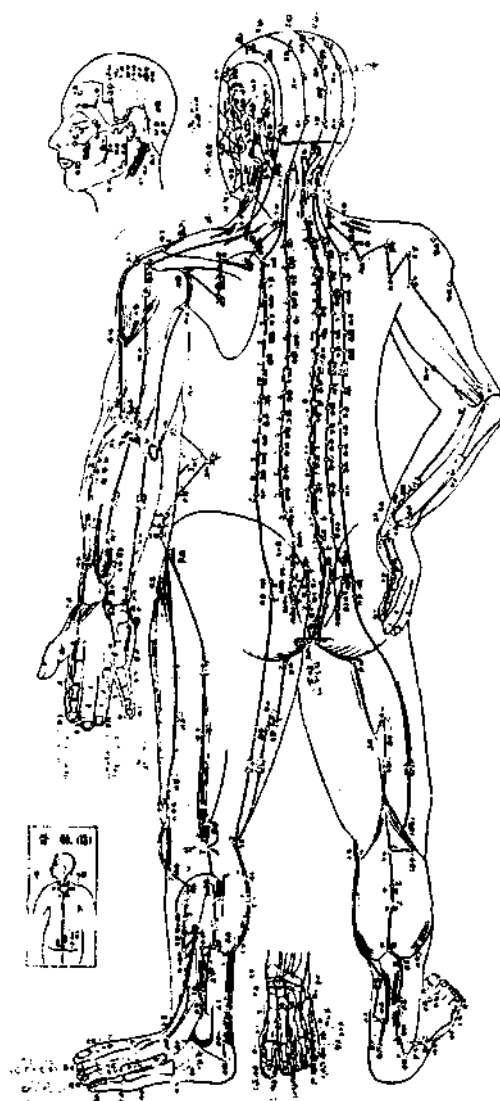


Fig-16 本間祥白 "人体のツボ"

Charts of "Tsubo" (points) and "Keiraku" (channels) in the human body
(By courtesy of Idou-no-Nipponsha)

Owing to this cause, it is known that one must watch the television at a distance of about 3 meters (about 9 feet) at least, if one wants to stay healthy. This saying is corroborated by experimental data.

I have experimented it with a cooperation of many mediums who can see the aura as well as acupuncturists. A 16-inch B & W TV set in working radiates yellow aura within a radius of about 9 feet. This aura swings the indicator of the aurameter in the positive direction. Such aura gravely affects the electrical characteristics of tsubos throughout the human body within a matter of seconds.

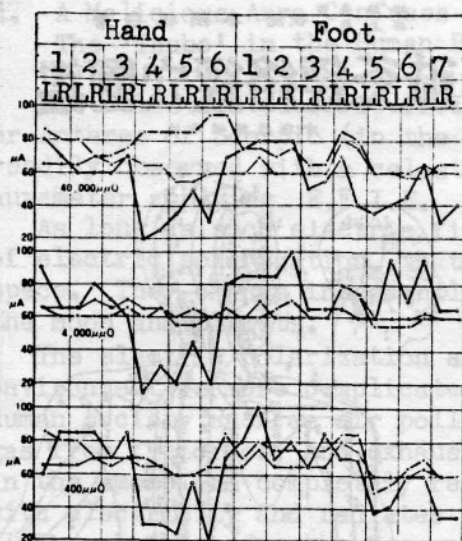


Fig-15 Experiment of the electrical durability of tsubo in the human body.

- Δ: Normal state after current correction
- o: Under the influence of the positive field
- x: Under the influence of the negative field

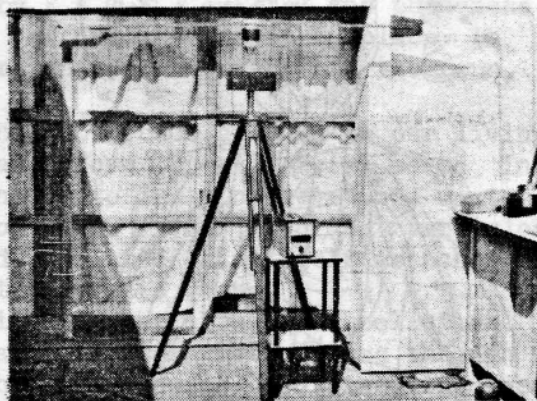


Photo-2 Celestial electric field meter

5. Deranged Tsubo May Be Cured with Gymnastics and Hot Bath:

It is often said that one tends to catch cold after the contact with high voltage, this is because tsubos are deranged by the emanation of malicious aura, or an electric field by E.F.I.E. to use a more familiar expression.

The news may be a big shock to electronics engineers. Some of them may even resolve that they will never have anything to do with electricity in future. But even if you change your profession from electronics engineering to something else, a different malicious aura is awaiting you everywhere in our human environment. I do not cite examples here, which are legion. I only state that, once you have chosen the profession of electronics engineering, you had better stick to it and think out some means to ward off the influence of malicious aura. You do not become suddenly ill when your tsubos are electrically affected. Do not worry overmuch.

After you have manipulated a high-voltage circuitry in a television set, the best way to get rid of undesirable charge is to do some gymnastics. Raise your hands high and shake them violently. Bend your knee, one each time, and kick the ground heartily. Hold your arms horizontally and twist your spine as far as it goes. Turn your head right and left thoroughly. You will notice that bones within your body make snapping noises near by the articulation* or cartilage* respectively. This means that your tsubos are regaining electrical equilibrium.

You are recommended to take a hot bath after work. If you don't like a hot bath, bathe in lukewarm water and heat it gradually. Then the electrical distortion in your tsubos will seldom be carried over till the next day.

Another advice. Take natural foods. Such chemical substances as artificial pigments and artificial sweeteners, as well as chemical seasonings, tend to harm your tsubos worse than high voltage, because these substance actually enter our system.

Electronics engineers should take care of his health by avoiding

artificial foods and seasonings, which may deal an electrical double punch on their tsubos.

TV sets and measuring instruments, which operate on high voltage, should be designed to be grounded by their positive terminals as much as possible in future. Use positively grounded instruments whenever possible. Grounding by negative terminal is the common sense of the present day, as a heritage of the vacuum-tube age.

However, this is quite undesirable from the standpoint of aura. If an age comes in which all electric instruments including TV sets are positively grounded, the physiognomy of electronics engineers will undergo a decided improvement. Even a happy physiognomy is ravaged by long years of work in electronics engineering. One begins to wear glasses and gets spoilt teeth and the chin begins to protrude. And they assume the shabby appearance common to many electronics technicians on the field!

That is the statistical data I have collected during 30 years of electronics engineering. The malicious aura can suck up the front part of the human aura irrespective of clothing. The mediums who are my dear friends see how such scar remains in the human aura for days.

6. The Principle of UFO! The Experiment of An Ion Craft:

An experiment to fly the model of a flying saucer using high voltage static electricity is very interesting as a parapsychological experiment. At present there are many research groups of flying saucers in middle schools, high schools and universities throughout Japan. Experiments of ion crafts has become an indispensable feature of many school festivals.

The ion craft, developed by the research group headed by Mr. Nobutsune Fujiwara, teacher of Katsuragi Middle School, Chiba Prefecture, Japan, is the world's first model of a flying saucer that flies and glides in the air practically.

Its construction and performance are shown in Fig. 17 and 18. As shown in Fig. 19 the attraction and repulsion between ionized air molecules, on the one hand, and positive and negative electrodes, on the other, give rise to the wind by ion current and make the saucer fly.

Air molecules near the needle electrode are strongly ionized owing to small surface area of the electrode. But molecules near the flat plate electrode are weakly ionized owing to large surface area. The unbalance of ionization is believed to be the cause of ion wind.

At first, I have taken over the research from Mr. N. Fujiwara, and I thought that a large craft can be constructed by strengthening ion wind. However, my many experiments have prudently revealed that one cannot construct a big ion craft by simply increasing the strength of ion wind.

I have found a still more curious fact through further researches and experiments. A motive force stronger than ion wind can be generated by connecting condensers in series (Fig. 20) and driving the assembly with AC, as if the ion craft constituted a diode. In this type of drive the current flowing through the main body is reduced to nearly zero through the action of the auto bias. Flying takes place purely through the high voltage of static electricity.

Furthermore, when I measured with the aurameter the field apparently generated by static charge, I have found a strange fact that flying takes place when positive and negative fields are distributed

unsymmetrically as in Fig. 21, but flying does not take place when the field are symmetrical like Fig. 22.

Unsymmetrical electric field is inconceivable in the older electromagnetic theory. However, actual measurement surely points to lack of symmetry. At first, I thought that this might be due to defective lead wire. But the measurement of surrounding electric field with an arrangement of Fig. 23 indicates that unsymmetrical electric field is generated irrespective of the state of lead wires. I think that probably such electromagnetic waves as millimeter-waves or microwaves are generated inside the main body. During the world war II, I read an experimental report on the generation of mm-waves and microwaves in the diode using high voltage D.C. Without applying a magnetic field in Japan. It is possible that the flying saucer is driven by the energy of electromagnetic waves.

Though the details are not known yet, not only a flying saucer but also a flying magic carpet may be developed by future research. It is entirely possible that flying objects based on the above-mentioned principle may be among the controversial UFO's which have come to the earth from unknown heavenly bodies and are causing such a commotion throughout the world.

7. Spirit on The Photograph:

It has sometimes happened that invisible spirits and faces of people who have been dead appear on photographs. They are summarily denied by scientists as tricks and forgery. But I wish to assert that such attitude is grossly mistaken.

If you take pictures in the manner explained below, you will probably find the picture of an uncanny spirit face among your pictures. You will make thus a mysterious experience.

I here describe a typical example. A beach with oncoming waves is preferable. Point your camera to where the direction of Antares of Scorpio is supposed to be. If you use a planisphere, you can locate its direction easily even in daytime and under cloudy sky.

A camera of any type or brand will do. Set the camera on a tripod and use the self-timer. The film may be black-and-white or color, negative or slide. The shutter speed and aperture may correspond to ordinary correct exposure. Be sure to eliminate glaring reflection of sunlight, if any, with a polarizing filter.

When you set the self-timer in motion, move away from the camera immediately to a distance of 2 - 5 meters. If you must release the shutter with hand, drive all air from your lungs and release the shutter while holding your breath. This precaution is necessary in order to minimize the influence of your own human aura.

When you examine the pictures thus taken, narrow your eyes and scan the picture carefully. You will surely find a face in one of the pictures.

Photo 3 is a example I took. It shows a spirit face like the sketched drawing. We do not know exactly how such a phenomenon takes place. At least, it is a fact that a phenomenon of optical diffraction and interference has occurred in a space still unknown to modern physics.

Even since I experienced this phenomenon in August, 1966, I have been incessantly endeavoring to solve the riddle. My present explanation is that a phenomenon closely resembling holography, a photographic

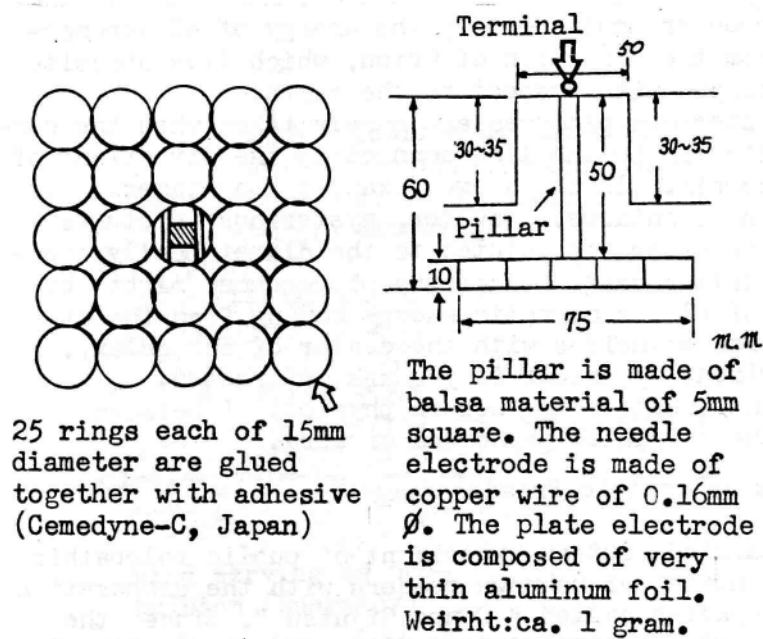


Fig-17 Dimensions of l-g ion craft

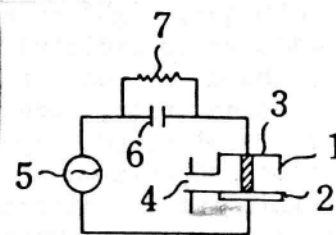


Fig. 20 A

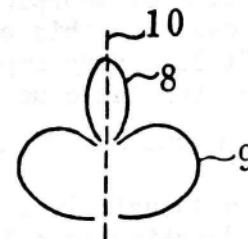


Fig. 20 B

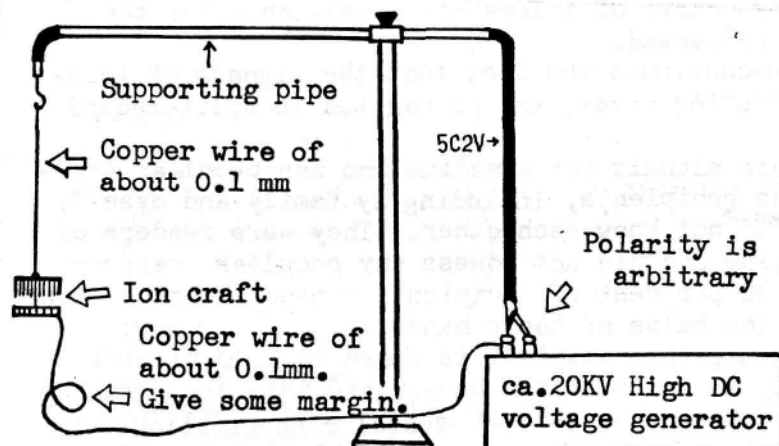


Fig-18 Experimental arrangement of the working principle (?) of a mysterious UFO. High voltage should be tapped from a TV set. If, however, high voltage of TV is used, the negative terminal should be grounded and the positive terminal should be connected cable.

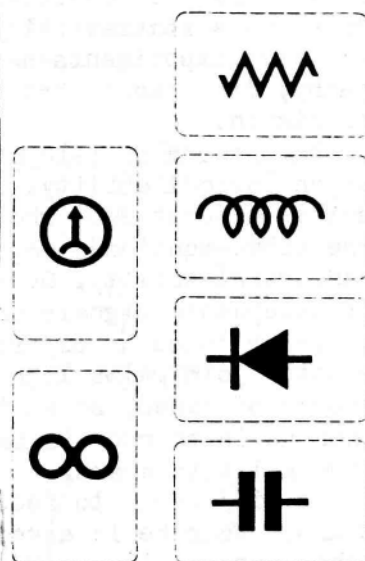


Fig-24 Telepathy card (Japan)

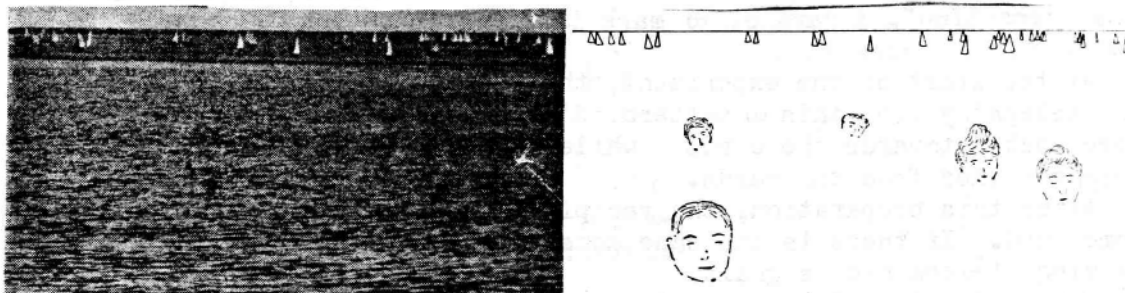


Photo 3 Phantom photography took at Hayama beach, Kanagawa Pref., Japan.

technique, might have been brought about by the energy of electromagnetic waves radiated from the direction of Orion, which lies opposite to the direction of Scorpio with respect to the earth.

At any rate, such mysterious pictures are rarely taken when the camera is directed perpendicular to the line connecting the direction of Orion and Antares of Scorpio. In the above example the camera is pointed at the direction of Antares. However, mysterious pictures tend to crop up when the camera is pointed to the diametrically opposite direction. In the latter case, holography phenomenon might be taking place by virtue of electromagnetic energy coming from the direction of Scorpio, which coincides with the center of our galaxy. You can make this experiment yourself if you are interested.

It is a very important question for modern physics. I believe here lies the clue to the enigmatic phenomena of aura.

8. Experiment of Public Telepathic Broadcasting:

In August, 1964, I carried out an experiment of public telepathic broadcasting to a large number of unknown readers with the cooperation of a Japanese monthly magazine called "Dempa Gijutsu". Since the public telepathic broadcasting was conducted afterwards in August of following years. Fig.24 shows the cards used in these experiments, Fig. 25 is the sensitivity curve of telepathic reception after the data were statistically processed.

These experiments have confirmed the fact that the signals of telepathy, like radio broadcasting waves, are propagated in split-second precision.

The sender of telepathic signals was a medium who has peculiar parapsychological ability. The recipients, including my family and myself, numbered about 200, who did not know each other. They were readers of the above-mentioned magazine and did not possess any peculiar parapsychological ability. Over 90 per cent of recipients sensed the reception of telepathic signals on the palms of their hands.

Prior to such experiment, the recipient is asked to hold himself erect, join palms lightly in front of the breast and take deep breaths scores of times, so as to enter the state of mental concentration. Then he is to rub his palms on each other scores of times and hold them a little apart.

He will begin to feel a peculiar light numbing sensation on his palms. When he is asked to move his palms towards and away from each other several times, he will feel as if they were sucked towards each other.

Arrived at this stage, he is to raise his left hand high and hold his right palm at a distance of about 10 - 20 cm over the card and see its "sensation". A card of ∞ mark is fixed in advance as a test pattern.

At the start of the experiment, the recipient must see how he senses the telepathy from this ∞ pattern. Some people feel as if their hands were sucked towards the cards, while others feel as if their hands were repelled from the cards.

After this preparation, the recipient is to hold his right palm over some card. If there is the same sensation, the card is definitely receiving telepathic signals.

One precaution. You must relax your arms and shoulders completely and your palm should be as soft as cotton, figuratively speaking. The

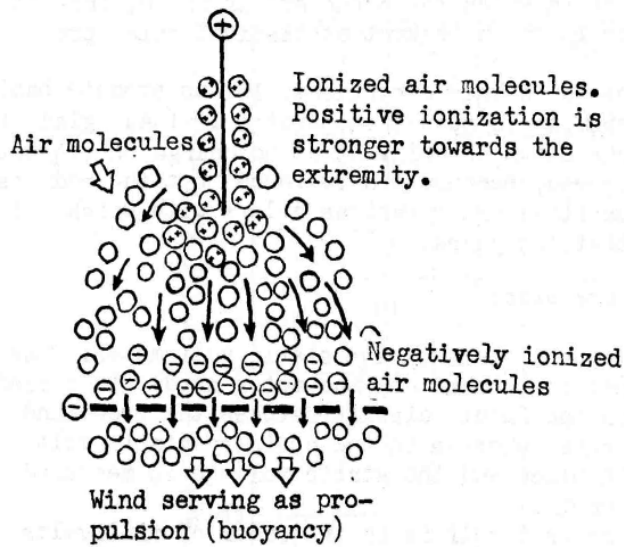
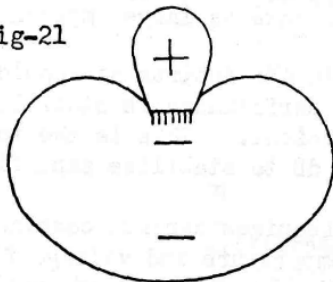


Fig-19 Plane-type flat plate electrode has perforation for the passage of ion wind.

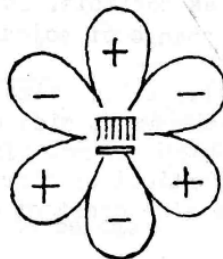
Fig-21



Unsymmetrical electric field (cross-section)
Electric field by E.F.I.E. surrounding a flying craft



Symmetrical field shaped like a two-leaf (cross-section)



Symmetrical field shaped like a six-petal flower (cross-section)

Fig-22 Electric field by E.F.I.E. surrounding a craft that can't fly

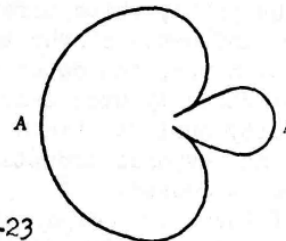
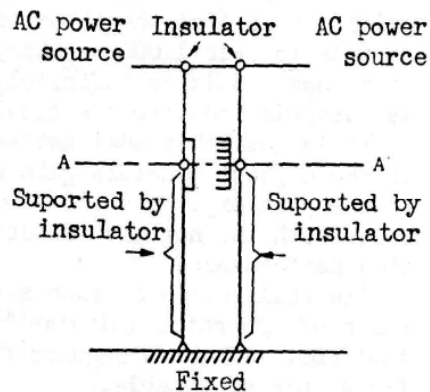


Fig-23
Unsymmetrical electric field A-A' sectional view

thumb should be held straight and parallel to other fingers. You must, furthermore, record the order in which the cards are arranged, for it becomes an important factor in the subsequent statistical data processing.

If you, too, are interested in this experiment, let us promote basic research on telepathic phenomena in mutual cooperation. I am glad to send you the telepathy cards shown in Fig. 24 at no charge on request. These cards are printed in red, because I have found that the red is telepathically the most sensitive among various colors with which I have experimented in the past ten years.

9. Basic Problems of An Aurameter:

This meter is essentially a high-sensitive static volt meter. One important difference is that in this meter, the meter needle is zeroed by applying bias voltage on the input circuit between the probe and the ground when measuring aura, whereas in the ordinary static volt meter the probe is fixed in place and the static voltage is measured between the probe and the earth.

The sensitivity of the meter itself is in the order of millivolts when the probe is not shielded, and is in the order of microvolts when the probe is shielded.

However, this meter differs from previous millivoltmeter and microvoltmeter in that the input impedance between the probe and the ground amounts to over 1,000 megohms at least. Ideally speaking, the input impedance should be infinitely large. So we take as large impedance as possible from the practical standpoint.

It is desirable that the amplifier used in the instrument should be of the highest possible gain as long as the performance is stabilized. In the past experiment 60 - 80 dB were sufficient. This is the total gain with the negative feedback of 60 - 80 dB to stabilize amplification performance.

The realization of such stabilized gain requires careful consideration of S/N ratio and stability against temperature and voltage fluctuations. If these requirements are satisfied, any types of amplifiers are acceptable.

The point, which sometime becomes important, comes under appreciable influence of the input side capacity owing to high input impedance. Hence, the meter reading is shifted somewhat according to the input capacity even same value of electric charge. So the input capacity must be taken as small as possible. In this way the meter reading responds promptly to the change of sojourn charge when the probe is moved.

If the input capacity is too large, the time constant, namely the time needed for the discharge of the input side capacitor becomes longer when the probe comes to a stop moving. If the probe is periodically moved in the horizontal, vertical or circular direction, the relation of the period of motion to time constant must be taken into consideration.

Volt may be taken as the unit of meter reading. However, the electric charge Q (Coulomb), which is the product of V (Volt) and C (Capacitance), seems to be more suitable as the unit since the reading is susceptible to error due to mutual influence between the motion of the probe and the input capacity.

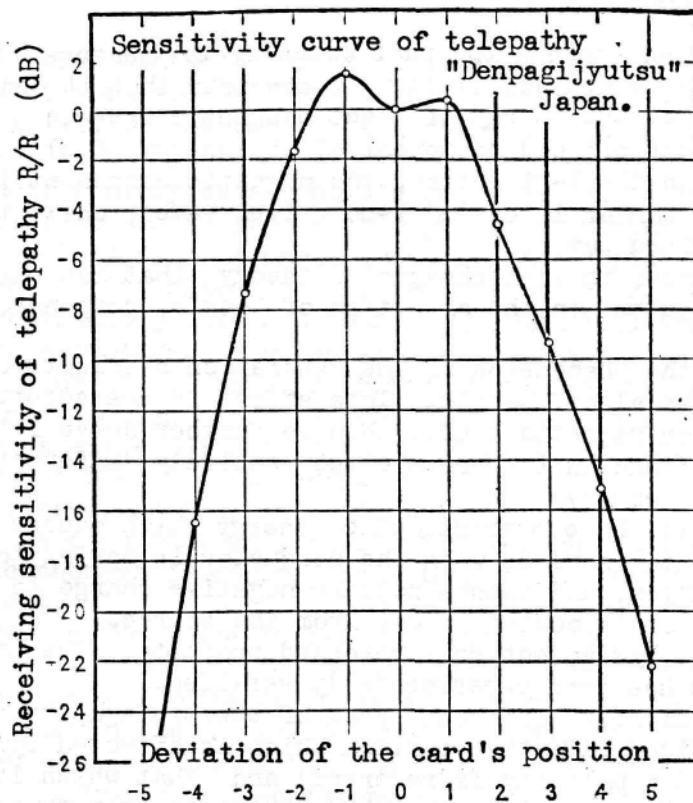


Fig-25 Thumb side \longleftrightarrow Little finger side

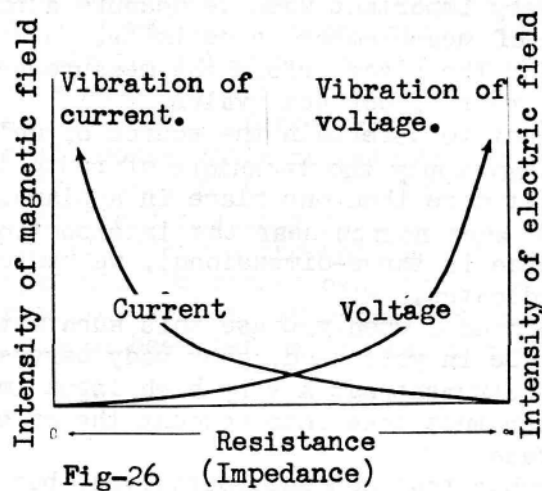


Fig-26 (Impedance)

But, $Q = CV$ happens to be the value of static charge when the probe is fixed in place.

The aurameter senses the dynamic electric charge when the probe is moved. It is essentially different from static electric charge though there is some similarity. In this sense the aurameter made on trial has the provisional reading of Aura as the unit, which is equivalent to Q . This problem deserves fundamental and careful study.

10. Basic Problems Concerning The Measurement of Aura:

Many people ask the question what actually is measured under the name of aura. As mentioned earlier, I consider that it measures as aura the Z-component of the energy of electromagnetic waves.

When the electric field component of the energy of electromagnetic waves is taken in the Y-direction, the magnetic component is directed to X-axis. The former is called Y-polarized waves, while the latter is called X-polarized waves.

It is well known in electromagnetic theory that the electromagnetic waves are propagated in the direction of Z-axis, perpendicular to both X and Y-axes.

E.F.I.E. is the phenomenon of the generation of electric charge when a conductor moves along Z-axis. This effect is characterized by the independence from magnetic field. When we further delve into this E.F.I.E., we have found that there are two entirely different types of electromagnetic energy.

One of them is the electromagnetic energy which causes sojourn negative charge to increase when the conductor is moving towards the source of radiation, and causes sojourn negative charge to decrease when the conductor is moving away from the source.

Another type has an entirely reversed property. The presence of these two types has been experimentally verified.

These two basically different types of electromagnetic energy are further subdivided into that portion which is affected by a shield (when the detected polarity is reversed) and that which is unaffected by the shield. Experiments have thus confirmed that there are 4 basically different types.

Since our living environment is permeated with the grand mixture of these 4 fundamentally different types of energy, to distinguish among them becomes very important when we measure aura by applying E.F.I.E. When the object of measurement is definite, we can measure the environmental aura of the place before the measurement of the object itself and use the former as correct value.

If, however, we want to ascertain the source of celestial aura of pollution aura, we may apply the technique of radio locator, i.e., we measure the aura at more than one place in a plane. We thus conclude the presence of aura source near the intersection of two directions. When the source is three-dimensional, we can use the combination of X and Y coordinates.

Grounding is recommended when you use this aura meter. If you use it by holding the probe in your hand, your body serves as an adequate grounding, for the instrument has a very high input impedance. However, the experimenter must take into account the effect of his own human aura in this case.

Here we must remember that not only ourselves, but also all things in our living environment, indeed all space and everything in the universe are permeated with aura. So far, I have never seen a thing or a space that is not accompanied with aura.

We must not forget that the instruments for detecting and analyzing aura are themselves emanating aura. To state more drastically, even the probe for sensing aura is emanating aura.

In addition to treating such a difficult problem, we must also take into consideration the effect of human aura generated by the experimenter.

CONCLUSION

Since 1963 I have conducted prudent research and experiments on the phenomenon of aura from different angles and finally set up a hypothesis of E.F.I.E. However, this hypothesis is merely a trial model of physical experiments related to the phenomena of aura. More detailed scientific study by scientists and researchers is awaited.

Let us express the world of electromagnetic phenomena by Fig. 26. Hitherto, two "poles" of this world, namely, the region of nearly zero resistance and infinite current, and that of nearly zero current and infinite resistance, have not found many technical applications.

There is one exception. A super express magnetic force train which can develop a speed of 500 km/h is in the process of birth, applying superconduction in which heavy current flows in a zero-resistance coil and produces extremely strong magnetic field through closed circuit vibration of electric current.

On the other hand, we tend to think that in a world of infinite resistance and zero current only electric field can exist and the electromagnetic phenomena accompanied with magnetic energy would be completely absent.

Nevertheless, in the space of infinite resistance, a latent field filled with various types of electromagnetic energy, including the energy of celestial electromagnetic waves, can exist. All types of field including matter, which exist in such space, are moving according to a fixed natural law similar to that of heavenly bodies.

Does not an electric field accompanying the open field vibration of voltage, namely, the field of aura energy, exist latently in a world of infinite resistance and zero current? The existence of the open field vibration of aura energy cannot be denied offhand if we remember the example of the field permeated with the electromagnetic energy radiation generated by oscillating atoms and molecules.

If we further remember the existence of a resonance frequency for every finite space of electromagnetic energy radiation field, we must also assume the latent existence of resonance phenomena of electromagnetic energy for all conceivable objects in our living environment as well as for heavenly bodies in the infinite space of the universe.

The research on aura field has only just begun. It is still unknown where future research will lead to and what world the applied technology is going to open up. We cannot deny that coming investigations will give us the key to the secret of mysterious phenomena of the world, which have hitherto been left alone as chances and superstitions.

(POSTSCRIPT)

International Telepathic Broadcasting

As mentioned earlier the experiment of public telepathic broadcasting has now developed into an international event among the 6 countries of West Germany, France, India, Japan, Turkey and Czechoslovakia, after Dr. Bayer of Turkey introduced it to the world and Mrs. Koutna of Czechoslovakia became the telepathic sender.

Reference data:

- 1) Maxime G. Kaufman (U.S. Naval Research Laboratory) "Force Field Detection of Objects in Space". 1966 IEEE International Convention Record, Part 10.
- 2) Hideo Uchida "Electric Field Induction Effect and its Application to Flying Saucers". The second International Congress on Psychotronic Research.
- 3) Hideo Uchida "A Method of Detecting Aura Phenomena". The PS Institute of Japan: 'PSI Science' Vol.1, No.1.

Comment by Prof. Dr. Hideo Seki:

The underlying principle behind the phenomena found by Dr. Uchida is not yet known today, but I found very interesting and important for the development of PSI Science research.